

New Four-Core 3,000m  
(10,000ft) world first  
high speed wireline  
borehole camera system



RGeo-eye® is a slimline full colour downward view camera, operating on a 4-core or coaxial cable at high transmission rate and is fully compatible with existing Robertson Geo winches and surface systems.

Seeing is believing

RGeo-fast® 

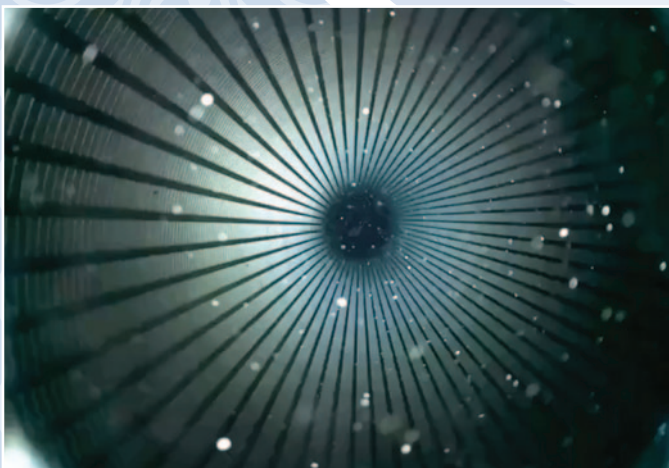
Delivering 1 Megabit/sec communications speed



RGeo-eye® employs a downward facing window with a fish-eye lens fully corrected for lens distortion before data is compressed and sent uphole. An LED light source, with controllable brightness is integral to the probe.



Open hole.



Cased hole.

## Seeing is believing

The RGeo-eye® camera system is a new introduction of a design and build development by Robertson Geo. It has a deep operating range for the acquisition of high quality video feed for deep subsurface applications. The camera operates on industry-standard 4-core or coaxial wireline cable, and offers pressure ratings to 5000 psi and a 75°C temperature rating.

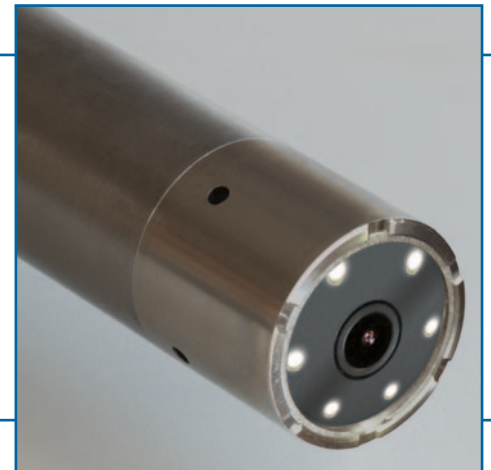
**RGeo-fast®** 

Delivering 1 Megabit/sec communications speed

The system incorporates RGeo-fast® delivering 1 Megabit/sec communication speed enabling the acquisition of high resolution video feed from downhole (to 3,000m) in air or water filled open or cased boreholes while allowing real-time viewing for the surface operative.

The camera has auto focus, a frontal six LED internal array with adjustable lighting intensity, and a user selectable resolution of SVGA (800 x 600) or (600 x 600), at up to 30 frames/sec.





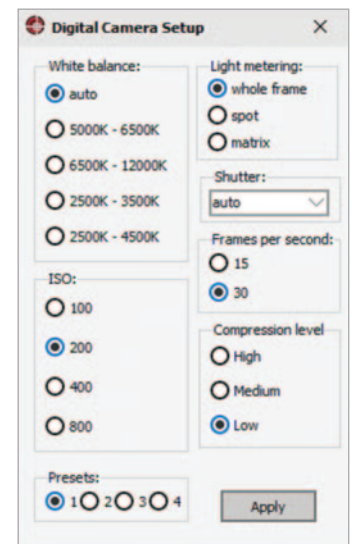
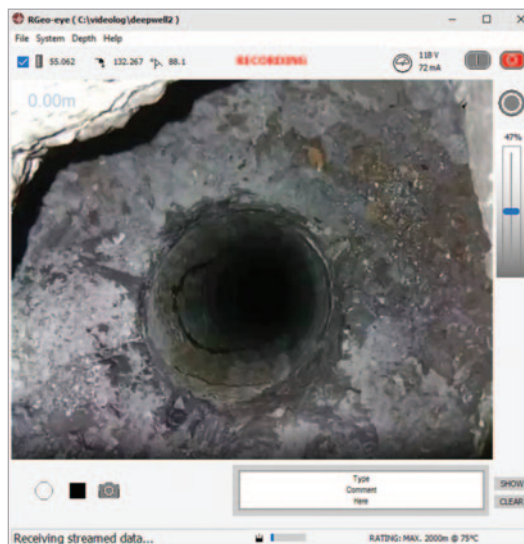
The RGeo-eye® is a robust, easy to deploy downhole camera at 1.08m (or 1.91m with sinker bar) x 43mm and only 5kg.

The standard RGeo-eye® camera is rated at 75°C, with an 85°C version available later in Q4. A 100°C version to follow in 2022.

The acquisition software package provided with the RGeo-eye® camera system allows extensive operator control including video resolution, frame rate, shutter speed, lighting brightness, white balance, UXGA 'snapshot' mode and real time video annotations.

Four user definable presets allow the operator to store optimal settings for various borehole conditions. Video is recorded in AVI and converted to MP4 for storage and relay.

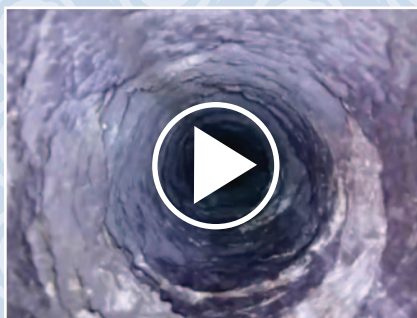
It allows screen shots to be captured and text editing while viewing/recording. Where more detail is required, full colour 'snapshot' images can also be captured at 1600 x 1200.



The RGeo-eye® camera comes with acquisition software that's easy to configure and work with, offering resolution control; lighting control; depth recording; text editing; recording video; screenshots; RGeo-eye® specification and depth & temperature warnings; Power meter and High res. frame capture mode with zoom-in function.

YouTube videos:

If viewing this literature digitally, click for downhole videos available on YouTube RGeo-eye® playlist.



Short video.



Downhole video.



## APPLICATIONS:

Borehole and casing integrity inspection  
Surveillance of mines, shafts, caverns and voids  
Assessment of deep concrete piles  
Pre-logging borehole examination  
Damage detection in subsurface structures

## OPERATING CONDITIONS:

**Borehole Type:** Air/water filled open hole or cased hole  
**Recommended Logging Speed:** 2 – 5m/min  
**Depth rating:** 3,000m on 4-core cable  
or 1,000m on coaxial cable\*

## SPECIFICATIONS:

**Diameter:** 43mm  
**Length:** 1.08m, or 1.91m with sinker bar  
**Weight:** 5kgs  
**Communication rate:** RGeo-fast® 1 Megabit/sec  
**Resolution:** Up to 30 frames per sec SVGA (800x600)  
or (600 x 600) - User selectable  
**'Snapshot' mode:** high resolution still image at UXGA  
(1600 x 1200)  
**Standard temperature rating:** 0-75°C (85°C version  
releases Q4 2021) - a 100°C version to follow in 2022  
**Max pressure:** 5000 psi  
Autofocus  
Frontal LED internal array, with adjustable lighting intensity  
**Light output:** 6 x 282lm @ 3,000K LEDs  
Additional lighting options for large diameter voids  
CE Certified and manufactured within an  
ISO9001:2015 quality system  
**Recommended minimum computer specification:** i7 7700  
processor with 16GB of memory running Intel HD Graphics 630  
card running Windows 10 64-bit

## PART NUMBERS:

I020263 RGeo-eye® Digital Downhole Camera (1,000m)  
I020408 RGeo-eye® Digital Downhole Camera (2,000m)  
I020409 RGeo-eye® Digital Downhole Camera (3,000m)  
I020412 Custom Peli Case for RGeo-eye® Camera  
I020264 RGeo-eye® Centraliser 76-110mm  
I020265 RGeo-eye® Centraliser 90-180mm  
I020266 RGeo-eye® Centraliser 180-260mm  
I020267 RGeo-eye® Sinker Bar

\* The depth rating on coaxial cable is dependent on the coaxial cable properties.



### Robertson Geologging Ltd.

Deganwy, Conwy, LL31 9PX, United Kingdom | T: +44 (0) 1492 582 323 | E: info@robertson-geo.com

### Robertson Geologging (USA) Inc.

1809 N. Helm Ave., Suite 4, Fresno, CA 93727, USA | T: +1 (559) 456 1711 | E: sstroud@robertson-geo.com

### Robertson Geologging (Asia) Inc.

Flat 21A, Village Tower, 7 Village Road, Happy Valley, Hong Kong | T: +852 650 33486 | E: steveparry@robertson-geo.com

[www.robertson-geo.com](http://www.robertson-geo.com)